

THE MPPD MINUTE



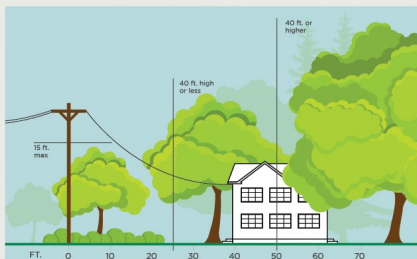
August
2024

3 Ways to Help Limit Tree Trimming

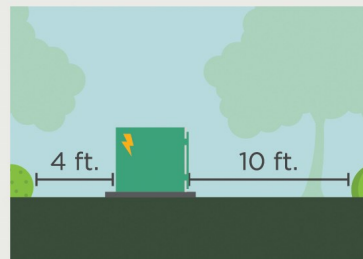
Did you know electric utilities are required to trim trees and other types of vegetation that grow too close to overhead power lines? We know you love your trees, and we will do everything we can to avoid trimming them.

Here's how you can help:

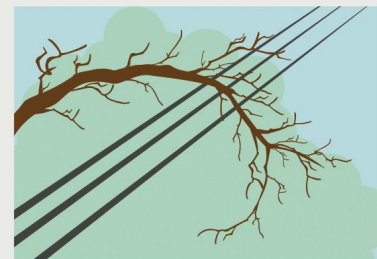
1. Plant trees in the right place. Trees that will be <40 ft. should be planted at least 25 ft. away from power lines (>40ft. should be at least 50 ft. away).



2. Don't block pad-mounted transformers. Plant shrubs at least 10 ft. away from transformer doors and 4 ft. from transformer sides.



3. Report dangerous branches. If you spot a tree or branch that is dangerously close to power lines, please let us know.



Trimming improves safety for all.

Let's work together to enjoy the beauty of trees and reliable electricity.

NREA HOSTS YOUTH TOUR TO WASHINGTON D.C.



On June 20, 2024, high school students from across Nebraska returned from its annual Youth Tour of our Nation's Capital. Each year the Nebraska Rural Electric Association (NREA) hosts the Tour providing rural high school students, representing their public power districts, the opportunity to see the sites of our Nation's Capital first-hand. While on Tour, students visited Gettysburg Battlefield, Mount Vernon, Arlington National Cemetery, and numerous historical sites and monuments around Washington, D.C.

Representing MPPD: Kaydence Long (left) and Jessica Pochop are pictured in front of our Nation's Capitol. Both are students at McCook High School.