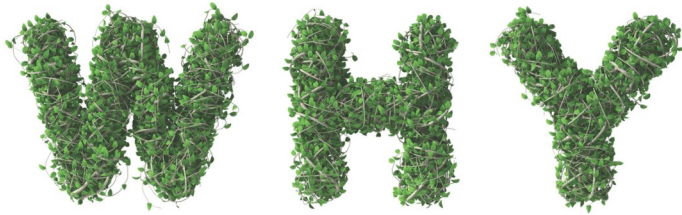


THE MPPD MINUTE



October 2024



is tree trimming needed?

Trees that make contact with power lines can cause power outages. Maintaining a clearance on all sides of power lines helps keep the electricity on in homes and businesses. That is why trees that grow into lines need to be trimmed and sometimes even removed.

If you notice that your trees are growing into power lines, contact your electric utility to determine the next recommended step. Only professionals that are trained to safely prune and trim trees for electric line clearance should be hired to do the work.



Board of Directors

- Todd Deatrach, Maywood.....President
(308) 367-4319
- Heath Bortner, McCook.....Vice President
(308) 340-3428
- Jim Ruggles, McCook.....Secretary
(308) 340-9772
- Darren Pollmann, Indianola.....Treasurer
(308) 340-6033
- Raymond Tillotson, Farnam.....Director
(308) 569-2450
- Dennis Reiners, Trenton.....Director
(308) 334-5421

The McCook Public Power District Board of Directors meets monthly on the third Tuesday of each month at 9:00am at the District office in McCook, Nebraska. An agenda for the meeting is kept current and is available for inspection at the District office during normal business hours.

FARM SAFETY

POWER SOURCES

Make sure EVERYONE is trained on safe practices around power transmission. This includes you, your employees, seasonal workers, family members, and anyone else accessing your farm. Keep in mind:

- Bigger equipment allows farmers to cover more ground in less time; however, this can be a hazard when electrical infrastructures are nearby.
- Inexperienced, fatigued or distracted operators are more likely to come in contact with a power line or pole.
- Sources of electricity include power lines, electrical boxes, and damaged (non-grounded) guy wires.

If your equipment does hit a power line, pole, or guy wire, do not leave the cab. Immediately call 9-1-1, warn others to stay away, and wait for the utility crew to cut the power.



MPPD
1510 North Highway 83
PO Box 1147
McCook, NE 69001

Monday – Thursday
7:00 a.m. – 4:30 p.m.

Friday
7:00 a.m. – 3:30 p.m.